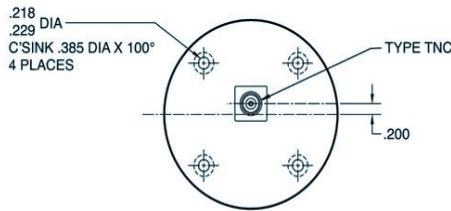
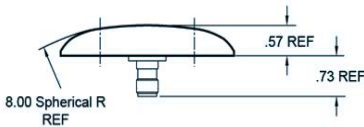
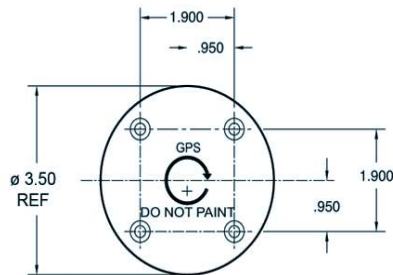


# GPS L1 Antenna S67-1575-20



Please Note: For REFERENCE ONLY  
Contact Sensor Systems for latest drawing

## Description

**S67-1575-20:** L1 GPS Antenna operating at 1575.42 MHz. Spherical radius molded radome provides enhanced protection against rain, ice. Application for airborne, marine, ground vehicles and manpack installation. Passive.

NSN: 5985-01-451-7424

**FEDERAL & MILITARY SPECS:** TSO C115a & C129, DO-160C, MIL-HDBK-5400, MIL-STD-810.

## Specifications

### Electrical

Frequency	1575.42 MHz
VSWR	≤ 1.5:1
Polarization	RCHP
Gain Coverage (min.)	-1.0 dBic $0^\circ \leq \theta \leq 75^\circ$
	-2.5 dBic $75^\circ \leq \theta \leq 80^\circ$
	-4.5 dBic $80^\circ \leq \theta \leq 85^\circ$
	-7.5 dBic $\theta = 90^\circ$ @ Horizon
Impedance	50 $\Omega$
Power	1 Watt

### Mechanical

Weight	3.6 oz.
Height	.57 in.
Diameter	3.50 in.
Material	6061-T6 Aluminum / Thermoset Plastic
Finish	Skydrol Resistant Enamel
Connector	TNC Female

### Environmental

Temperature	-55°C (-67°F) to +85°C (+185°F)
Altitude	-100 to 55,000 ft.



A HEICO COMPANY

Website: [www.sensorantennas.com](http://www.sensorantennas.com)

Phone: 818-341-5366