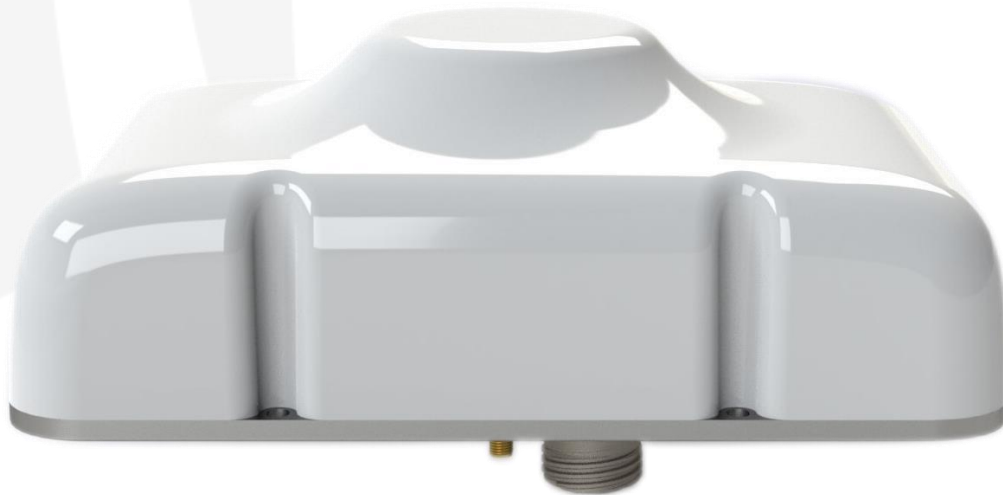


# G6

iridium® CERTUS®100



## An all-in-one satellite Terminal

The G6 provides an IP data platform for any aviation asset and guarantees connectivity anywhere in the world.

### DESCRIPTION

The G6 terminal utilizes bi-directional mid-band 88kbps for use with the Iridium NEXT Satellite network. It uses IP data protocol and has multiple interfaces to ensure simple application integration. The design have made it the ideal solution for military/law enforcement/EMS applications that rely on critical data communication.

### KEY FEATURES

- ✓ 88/88 kbps Satellite Terminal
- ✓ All-in-one
- ✓ Truly Global coverage
- ✓ DO-160G Certified
- ✓ Encryption
- ✓ Integrated Iridium and GPS antenna
- ✓ Multiple interfaces
- ✓ Uninterrupted power
- ✓ Background IP
- ✓ Streaming video and imagery
- ✓ Voice, VOIP & PTT
- ✓ Flight Data Monitoring, telemetry and exceedances
- ✓ Automated Flight Following (AFF)
- ✓ Enhanced aerial firefighting

## SPECIFICATIONS



### MODEM

CERTUS® 100 **Jacobs** CST  
88/88kbps



### SIZE

W 14.7 cm (5.75") x L 22.6 cm  
(8.85") x H 8.1 cm (3.2")



### WEIGHT

<2 kg (4.4 lbs)  
excludes any optional  
mounting bracket.



### POWER

12V - 32VDC wide range 3A



### ENVIRONMENTAL

#### Operating Temperature:

-40 Deg C to +71 Deg C

#### Storage Temperature:

-40 Deg C to +85 Deg C



### SENSORS

Altimeter, 3 Axis  
Accelerometer, 3 Axis Gyro,  
3 Axis Magnetometer,  
Temperature



### SAND AND DUST PROOF AT

+55 Deg C and ambient



### CONNECTORS

D38999

13 Pin or 37 Pin Amphenol mil-spec  
circular connector



### INTERFACE

WiFi, RS232, 1x Ethernet, 2X  
ARINC 429 RX, 9 digital  
inputs, 2x digital outputs,  
5x analog inputs, analog  
audio I/O, ARINC429  
(requires 37 pin connector)



### ALTITUDE

Up to 35,000 Feet



### HUMIDITY

Up to 95% at +55 Deg C



### SALT FOG

48-hour continuous exposure



### ANTENNAS

Built in Iridium CERTUS  
and GPS



### INGRESS PROTECTION CODE

IP 66



### FLUID SUSCEPTIBILITY

Continuous spray of de-icing fluid



**GuardianMobility**

[www.guardianmobility.com](http://www.guardianmobility.com)

Guardian Mobility Incorporated  
43 Auriga Drive, Ottawa,  
Ontario, K2E 7Y8

[inquiries@guardianmobility.com](mailto:inquiries@guardianmobility.com)  
Fax: 888-817-8159  
Phone: 613-225-8885

 **ENVIRONMENTAL**

**DESIGNED TO RTCA/DO-160G/MIL-ST-704F (28VDC SYSTEMS)**



**TEMPERATURE**

Category B2



**HUMIDITY**

Category C



**VIBRATION**

Category S & U2



**EXPLOSIVE ATMOSPHERE**

Category E



**WATERPROOFNESS**

Category S



**FLUID SUSCEPTIBILITY**

Category F



**POWER INPUT**

Category B



**VOLTAGE SPIKE**

Category A



**RADIO FREQUENCY  
SUSCEPTIBILITY**

Category T



**RADIO FREQUENCY  
EMISSION**

Category H



**AUDIO FREQUENCY  
SUSCEPTIBILITY**

Category B



**INDUCED SIGNAL  
SUSCEPTIBILITY**

Category AC



**MIL-STD-704F  
POWER 28 VDC**

Table IV, Fig 13 & 15



**GuardianMobility**

[www.guardianmobility.com](http://www.guardianmobility.com)

Guardian Mobility Incorporated  
43 Auriga Drive, Ottawa,  
Ontario, K2E 7Y8

[inquiries@guardianmobility.com](mailto:inquiries@guardianmobility.com)  
Phone: 613-225-8885